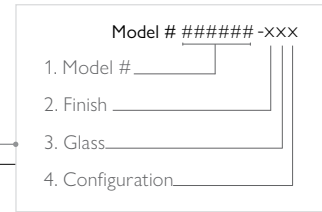


HOW TO ORDER ELEVATE PENDANTS

1

SELECT MODEL

Select base Model # from opposite page.
Use our Elevate Model # builder as a guide.



2

FINISH OPTIONS

Also available in our five Standard Finish Options.



Standard Silver Leaf (-1xx)



Standard Soft Gold Leaf (-2xx)

3

GLASS OPTIONS

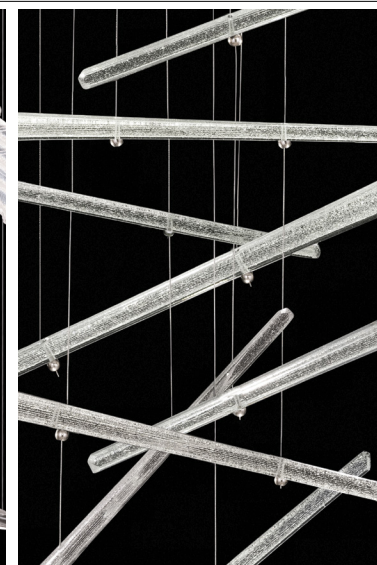
Glass quantities vary per Model #.
Angle of glass placement may increase
overall width of fixture.



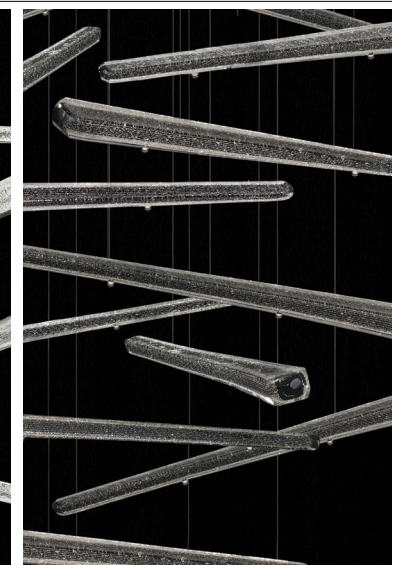
DICHOIRIC PLUMES (-x1x)



WHITE PLUMES (-x2x)



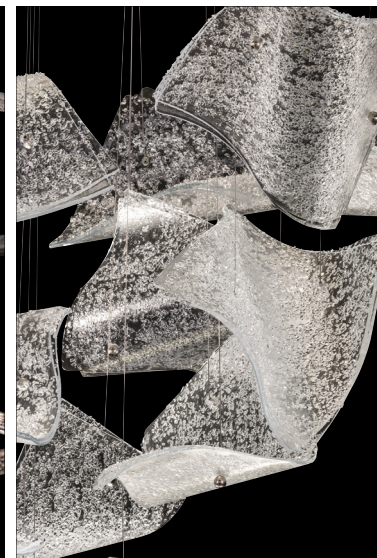
CRYSTAL STARDUST SPIRES (-x3x)



EBONY STARDUST SPIRES (-x4x)



METEORITE SPIRES (-x5x)



FROZEN PAGES (-x6x)

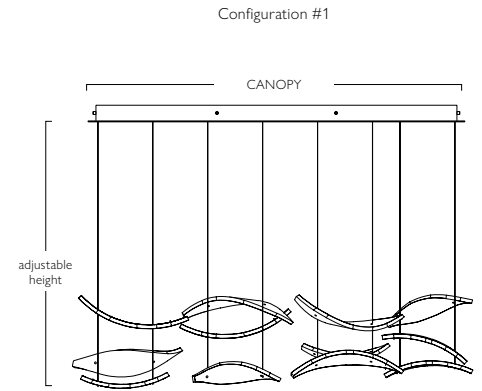
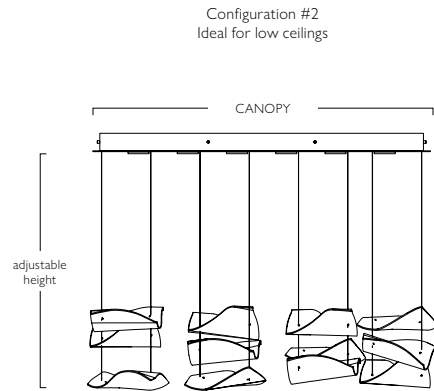
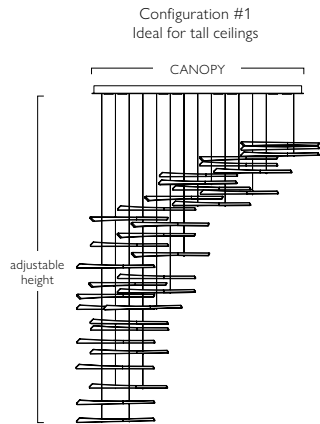


BLANK PAGES (-x7x)

4

CANOPY CONFIGURATIONS

Not suitable for vaulted ceilings.



54" RECTANGULAR PENDANT

Configuration #1: Ideal for tall ceilings

Model #
894840-xx1

Canopy Dimensions

W 54" (137 cm) D 17" (43 cm)
Min Ht: 65" (165 cm) Max Ht: 120" (305 cm)

Electrical

Bulb Qty: 8

Glass Qty

Plume/Spires: 32 Pages: 20

Configuration #2: Ideal for low ceilings

Model #
894840-xx2

Canopy Dimensions

W 54" (137 cm) D 17" (43 cm)
Min Ht: 16" (41 cm) Max Ht: 120" (305 cm)

Electrical

Bulb Qty: 8

Glass Qty

Plume/Pages: 15 Spires: 20

48" RECTANGULAR PENDANT

Configuration #1

Model #
895140-xx1*

Canopy Dimensions

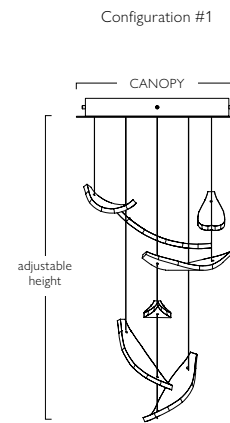
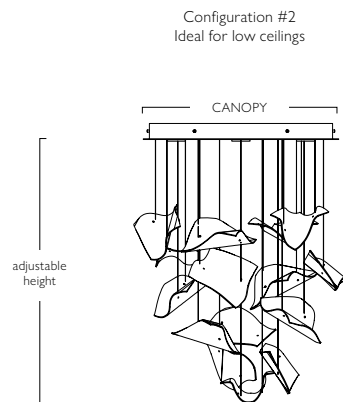
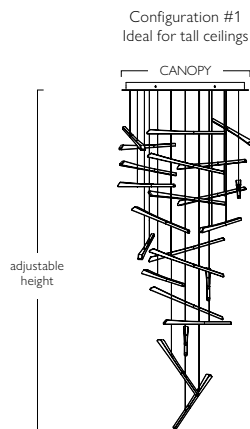
W 48" (122 cm) D 11" (28 cm)
Min Ht: 16" (41 cm) Max Ht: 120" (305 cm)

Electrical

Bulb Qty: 6

Glass Qty

Plume/Pages: 12 Spires: 18



32" ROUND PENDANT

Configuration #1: Ideal for tall ceilings

Model #
895840-xx1

Canopy Dimensions

W 32" (81 cm)
Min Ht: 52" (132 cm) Max Ht: 120" (305 cm)

Electrical

Bulb Qty: 8

Glass Qty

Plume/Pages: 20 Spires: 23

Configuration #2: Ideal for low ceilings

Model #
895840-xx2

Canopy Dimensions

W 32" (81 cm)
Min Ht: 34" (86 cm) Max Ht: 120" (305 cm)

Electrical

Bulb Qty: 8

Glass Qty

Plume/Pages: 15 Spires: 17

18" ROUND PENDANT

Configuration #1

Model #
895640-xx1*

Canopy Dimensions

W 18" (46 cm)
Min Ht: 23" (58 cm) Max Ht: 120" (305 cm)

Electrical

Bulb Qty: 3

Glass Qty

Plume/Pages: 7 Spires: 10

Bulbs are included: US/INTL: MR16, GU10, 6.5w max, 2700k
Angle of glass placement may increase overall width of fixture.

*Model numbers 895140 and 895640 are only available in one configuration.

10' cables included. Longer cables are available through our Customization Program.
Extending cables requires a bulb change.